



V.I.P. Realty, Inc.

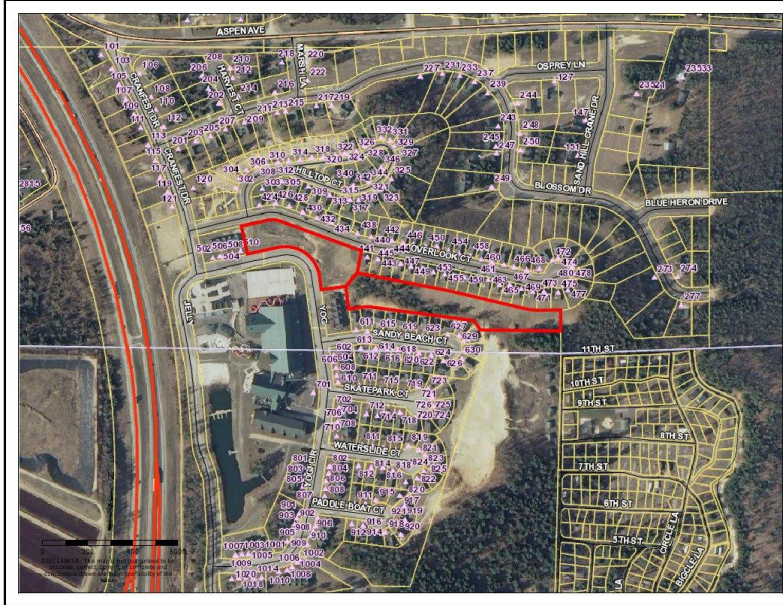
800 Superior Avenue Tomah, WI 54660



608-374-4790

www.viprealty4u.com

e-mail: viprealty@centurytel.net



Overlook me not!

Very interesting: This listing covers 2 tax parcels. The first is 1-2/3 acre+/- with good frontage along Yogi Circle and along Overlook Court. It is across the street from the parking garage, skateboard park and the waterpark. What a great place for your home, storage units or boat or RV storage (check zoning). There are restrictive covenants to protect your investment. Electric and water lines are already available. A water bill of \$22 is paid monthly.

The second piece lies between the homes on Overlook Ct and Sandy Beach Ct. It would be a great piece to add to your home on these courts so you have 2.6 acres to play on in your backyard. The price covers both pieces which would give you 4-1/4 acres with good frontage on Yogi Circle and Overlook Court plus a lot of land to play on. For more information on the park go to www.threebearslodgewarrens.com.

Owner: Bennett

Listed By: Aaron Stockwell

Tax Parcels: 185-00191-0000 + 185-01455-0157

PRICE REDUCED!

2016 Taxes: \$321.87

School District: Tomah

Zoning: Residential

3095	1799298	4.25 Acres – Jellystone Park	Cranberry Lake Village	Warrens	Monroe	\$17,900
Listing #	MLS #	Property Address	Development	Village	County	Price

DIRECTIONS from I94: Take EW east – Left on Jellystone Park Dr – Right on Yogi Circle.

Information herein is not warranted and subject to change without notice. We assume no liabilities for errors.