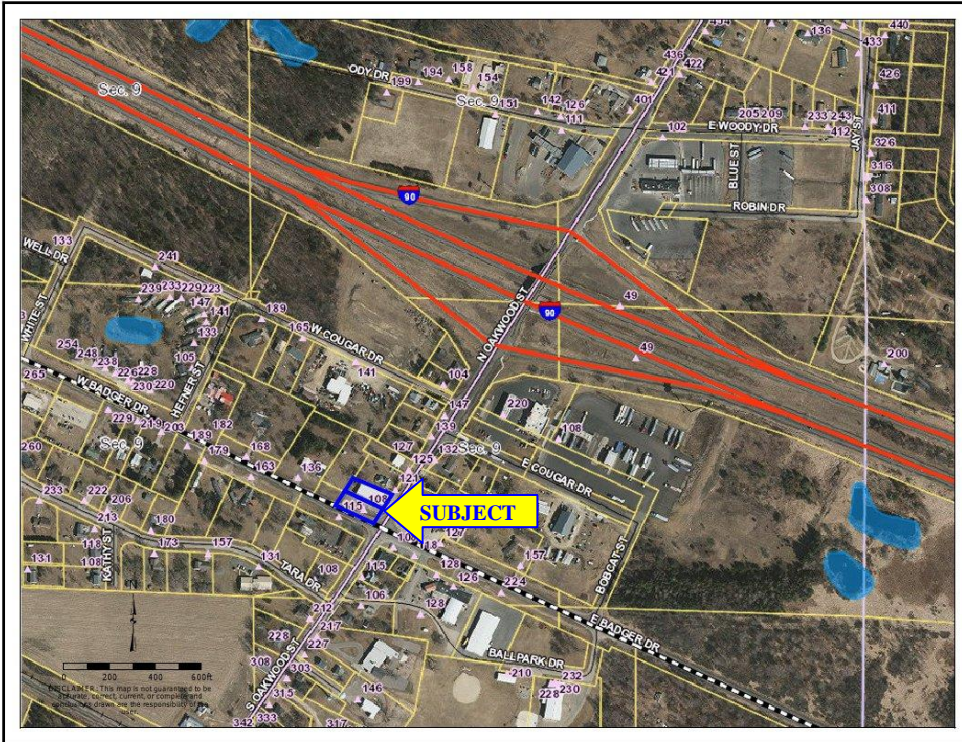




V.I.P. Realty, Inc.
1600 Superior Avenue
Tomah, WI 54660
608-374-4790
 www.viprealty4u.com
 e-mail: viprealty@centurytel.net



Oakdale Commercial Corner...

These two commercial lots on the corner of Hwy 12/16 (Badger Drive) and County Highway N total .615 acre. There is a concrete pad that was the floor of a commercial building that was destroyed in a fire. It is a block from Loves Travel Stop (truck stop) and two blocks from I-90/94. Oakdale is the last exit westbound before I-90 and I-94 split and the first exit eastbound when the two I's converge. The seller indicates he will look at all reasonable offers.

Owner: Superior WI Properties Subsidiary of MWRC Inc.

Listed By: Wayne Stockwell

Lot Size: .615 Acre

2017 Taxes: \$232.89

School District: Tomah

Zoning: Commercial

Listing #	MLS #	Property Address	Municipality	County	Price
3580	1826375	.615 Acre Corner of Hwy 12/16 & Co N	Oakdale	Monroe	\$19,500

DIRECTIONS: Located on the corner of Highway 12/16 and County Hwy N in Oakdale.

Information herein is not warranted and subject to change without notice. We assume no liabilities for errors.